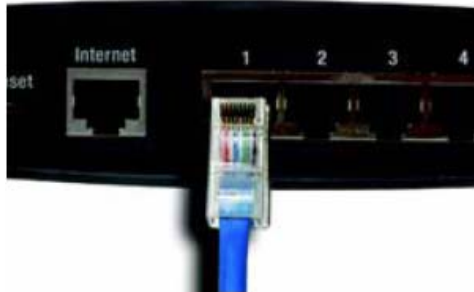


Basic Router Setup for EOT Wireless Service

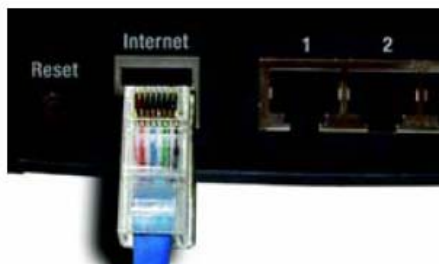
Because there are many different manufacturers and models of routers, this guide overviews a basic setup of several types and models of routers. For specific help or troubleshooting regarding a certain router, it is best to check with that router's manufacturer website or by calling their technical support.

1. Power off all devices (router, POE/Wireless Unit, PCs)
2. Using an Ethernet cable, plug one end into the LAN port on the router (These ports are usually labeled 1-4) Connect the other end of the Ethernet cable to the network card on the PC. (If your PC does not have a network card, one will need to be purchased and installed, refer to any included documentation with the network card or the manufacturer's technical support. If you are installing a wireless router, and aren't going to run a cable to each PC, you need to install wireless network cards into each PC. Once this is complete you may continue to step 3)



3. Now connect the POE/Wireless Unit to your router. Using another Ethernet cable, plug one end into the 10/100 B-T port on the POE/Wireless Unit.

Plug the other end of the cable into the WAN or Internet port on the router.



4. Connect power to each device in the following order, making sure to use the correct supplied power adapter for each device. Using the wrong power adapter can damage the modem or router.

- a. POE/Wireless Unit, wait approximately one minute
 - b. Router, wait approximately one minute
 - c. PCs, wait approximately one minute
5. If you are using wireless network cards in your PCs, install (if not already done) and configure these devices at this time. Refer to any included documentation or the manufacturer's technical support.
 6. EOT's Wireless network has 2 types of IP connections, Static and NAT/DHCP. Depending on your type of IP connection several router configurations will need to be performed before you will be able to access the Internet. Most connections are NAT/DHCP. Skip to Step 10, if you know you have a Static IP address. If you are unsure, please call our office for determining you IP connection type. Continue below for NAT/DHCP IP connections.
 7. EOT's Wireless network automatically assigns NAT/DHCP IPs of 192.168.1.3 through 192.168.1.255 This means that if your router's IP address is 192.168.1.1 you will need to change this in order for your router and Internet connection to function properly. (Refer to any included documentation or the manufacturer's technical support for further assistance with changing your router's IP address)

If you router's IP address is not 192.168.1.1, continue below.

8. Ensure that your router is picking up a valid EOT Wireless network NAT/DHCP address. (Refer to any included documentation or the manufacturer's technical support for further assistance in ensuring your router is picking up a valid IP address)
9. Try to access the Internet. If you are able to do so you have completed setting up your router. If you are unable to access the Internet, please refer to any included documentation or the manufacturer's technical support for further assistance. If you are able to access the Internet, you have completed setup.

As a last resort, EOT can arrange to visit your location and assist you in installing or configuring you router and PCs.

Static IP configuration (continued from Step 7 above)

10. If you do not already know your static IP you can either:
 - a. Lookup the static IP from the IP configuration on your current PC (remember you will have to set this PC to NAT/DHCP by removing the static IP currently configured, in order for your router setup to be completed)
 - b. Call our office regarding your static IP for more information.
11. Once you have your static IP information you need to configure your router with the following settings:
 - a. IP address
 - b. Subnet mask
 - c. Gateway, or default gateway
 - d. DNS (Domain Name Servers)

Refer to any included documentation or the manufacturer's technical support for further assistance in configuring your router with the static IP settings. Once you have completed this step, continue below.

12. Try to access the Internet. If you are able to do so you have completed setting up your router. If you are unable to access the Internet, please refer to any included documentation or the manufacturer's technical support for further assistance.

As a last resort, EOT can arrange to visit your location and assist you in installing or configuring you router and PCs.

This document last revised 5/15/2006 KEF